

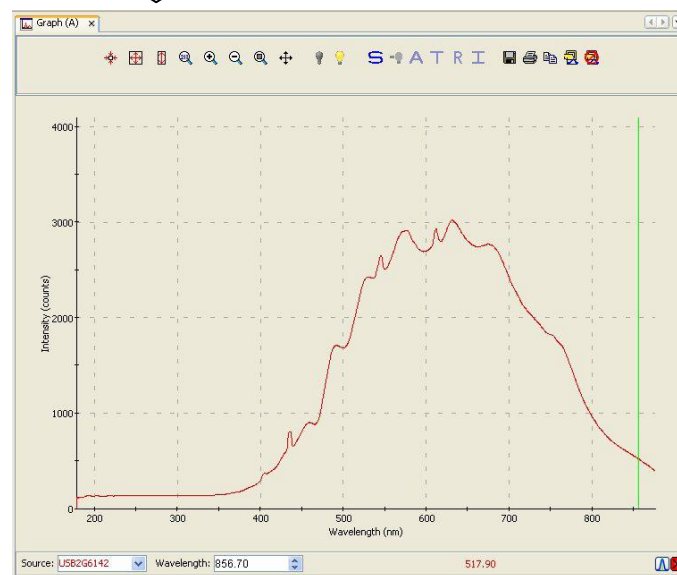
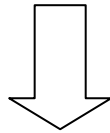
Spectrometer HR4000 Operating Software for observers

07.07.2012


Yu. Kupryakov

Zoom Tools

 This control zooms out to display a full view of the spectrum graph.



Manually Set Numeric Ranges

 This control enables you to set the exact zoom coordinates. When you click on the control, the Set Zoom Ranges dialog box appears so that you can enter the desired coordinates.




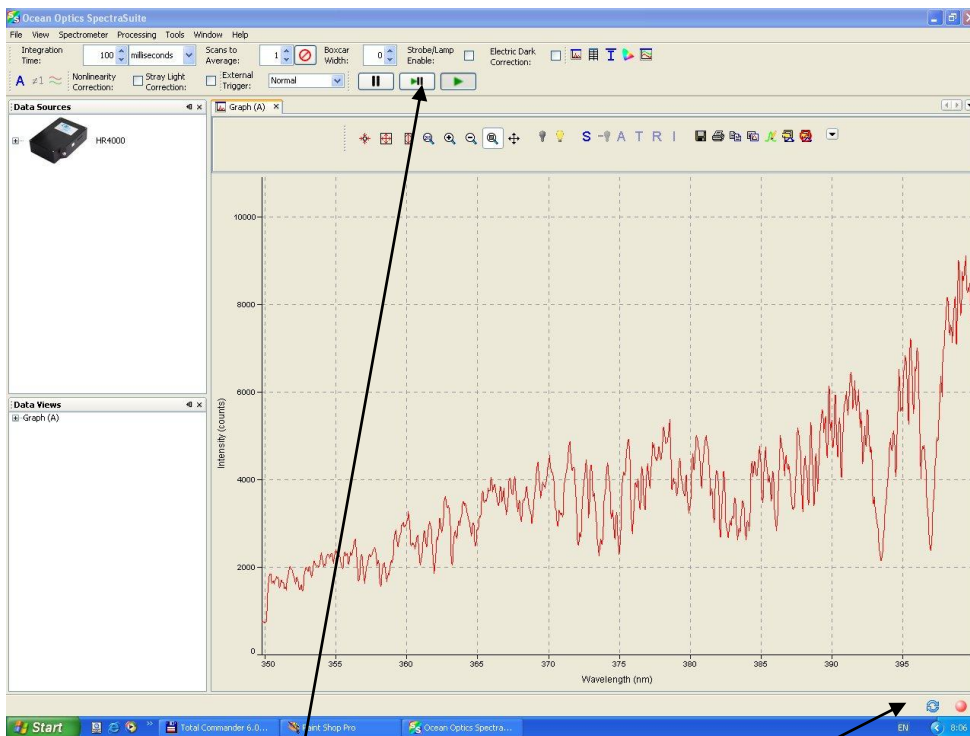
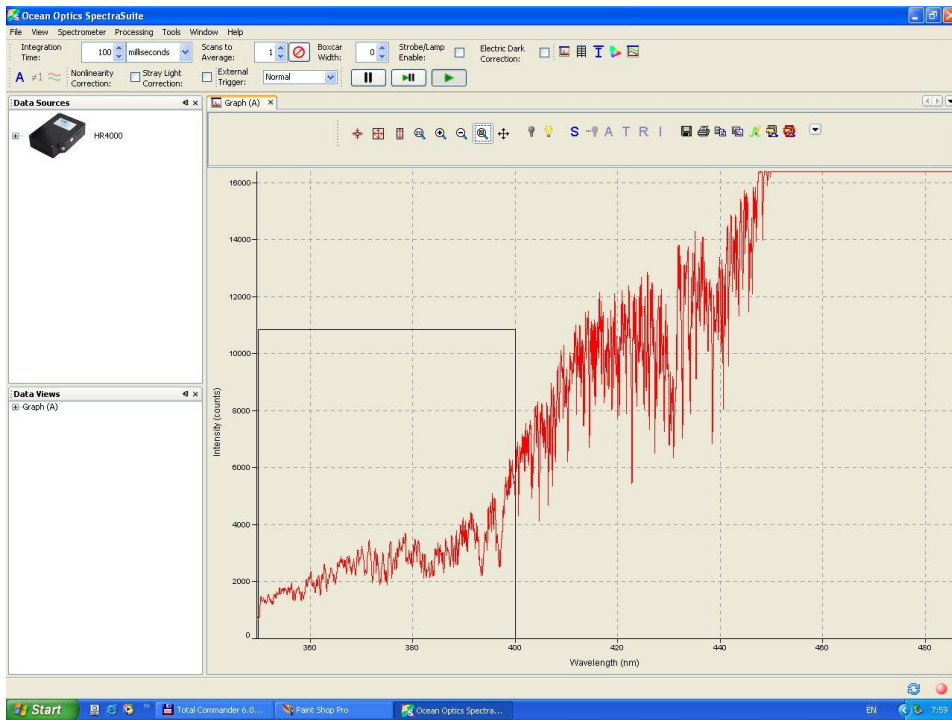
X-Axis Range	
Minimum:	178.32
Maximum:	876.19

Y-Axis Range	
Minimum:	0.0
Maximum:	3381.3

Buttons: Apply, Reset, Close

Zoom to Region

 This control allows you to select a section of the graph to zoom in on. When you click the control, a cursor appears on the screen, enabling you to box-in a region to zoom in on.




Acquisition Controls

Indicators Status


Acquisition Controls




 Pause selected acquisition


 Perform single acquisition

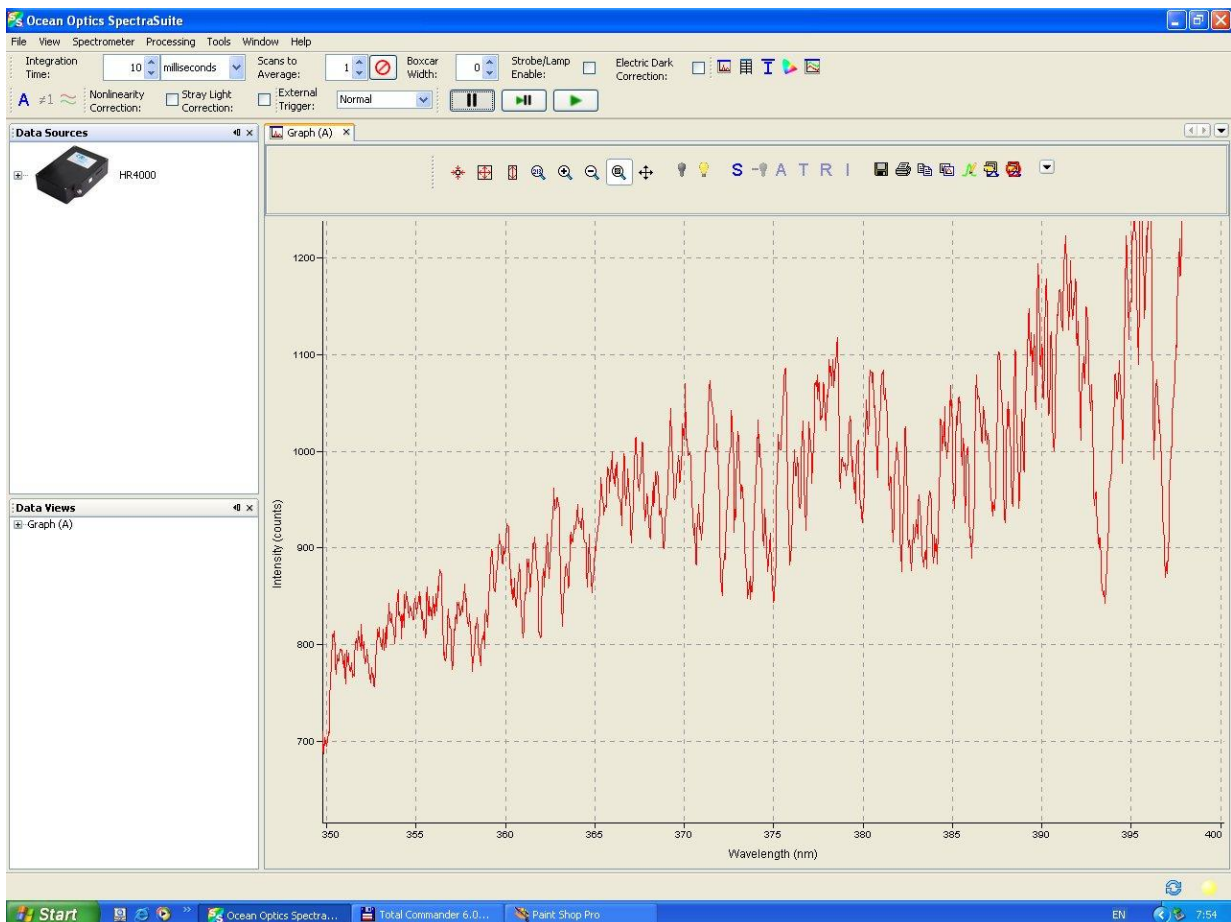
 Resume selected acquisition (**F3** → pause/play)

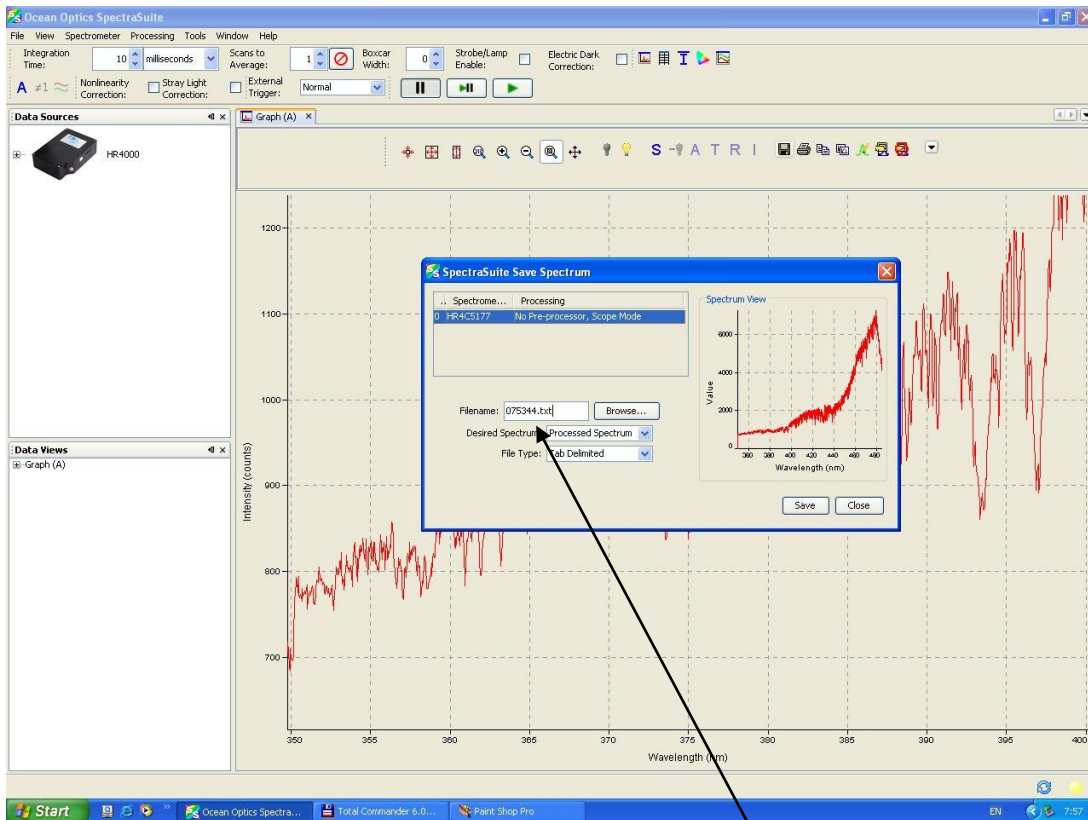
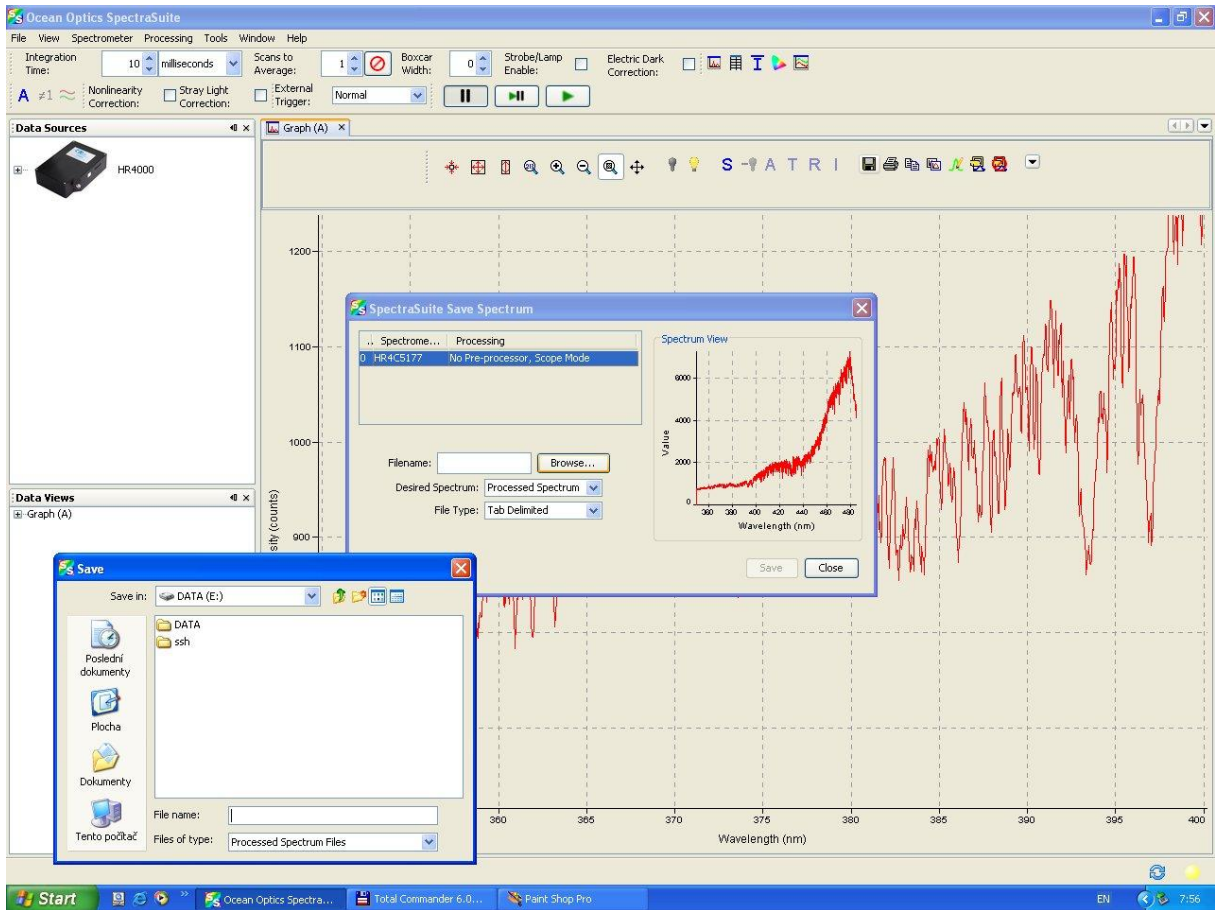
Indicators Status

 Recent acquisition within normal ranges

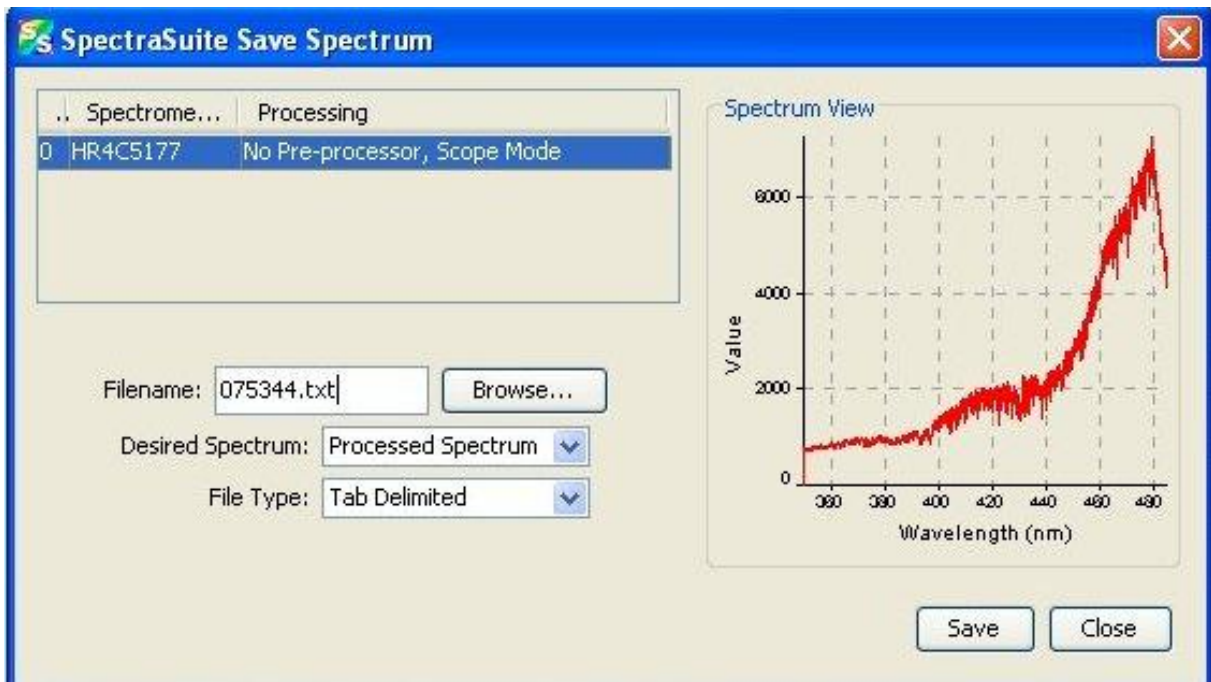
 Saturated signal  Acquisition is paused  Idle

Save Spectrum  (*.txt) + SJ (*.FTS)



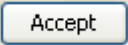


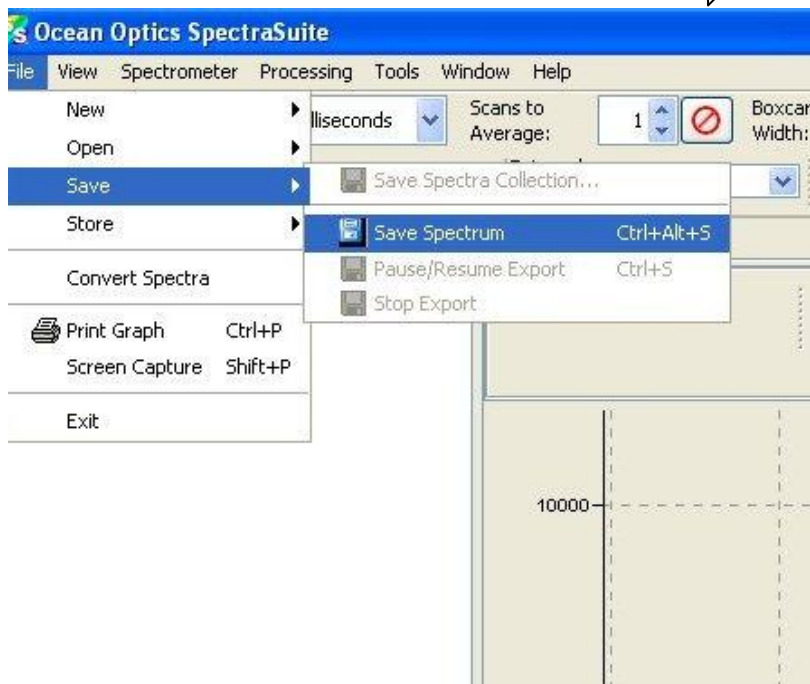
Format *.txt

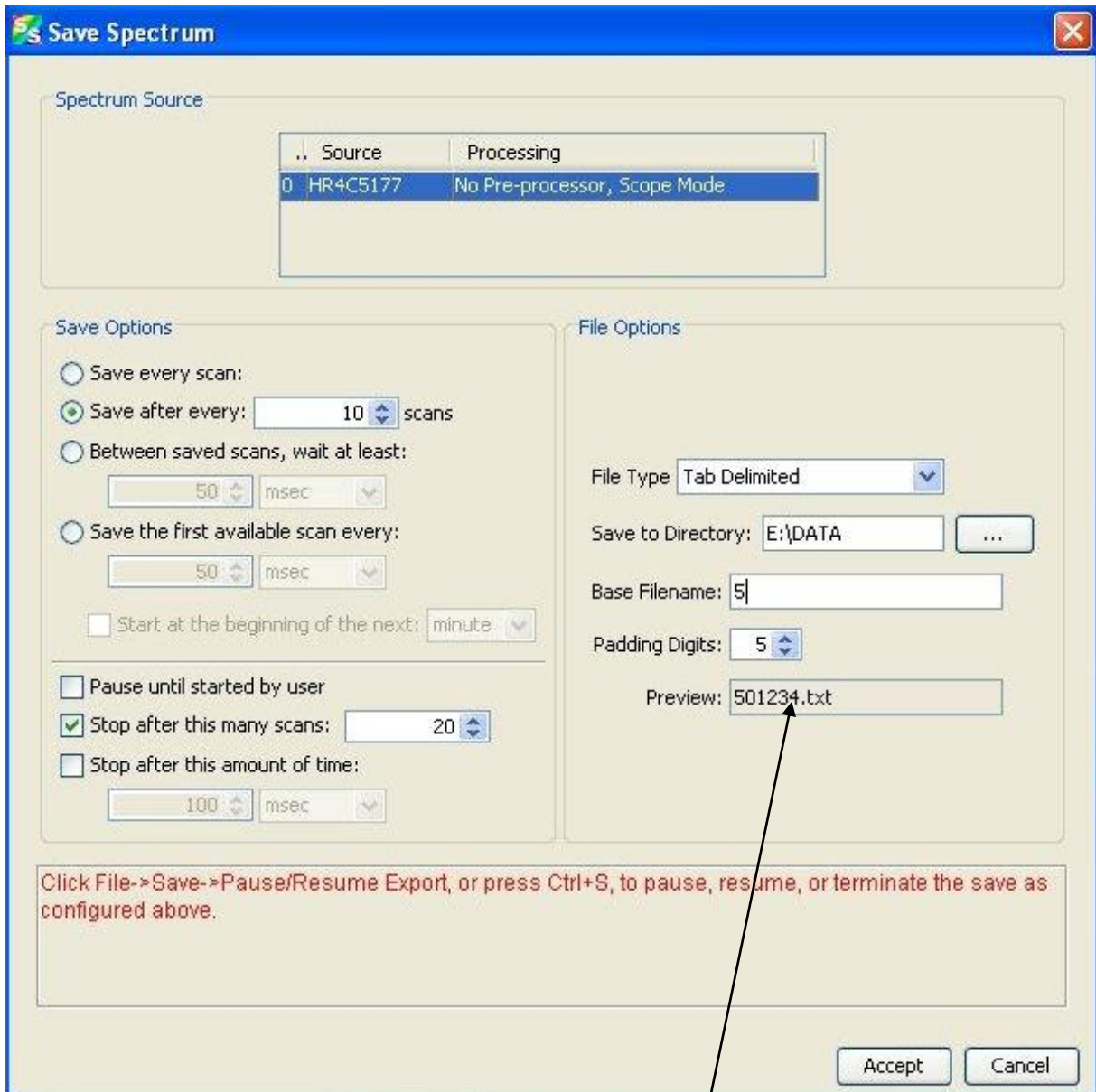


075344 → enter (**075344.txt**) → **Save**

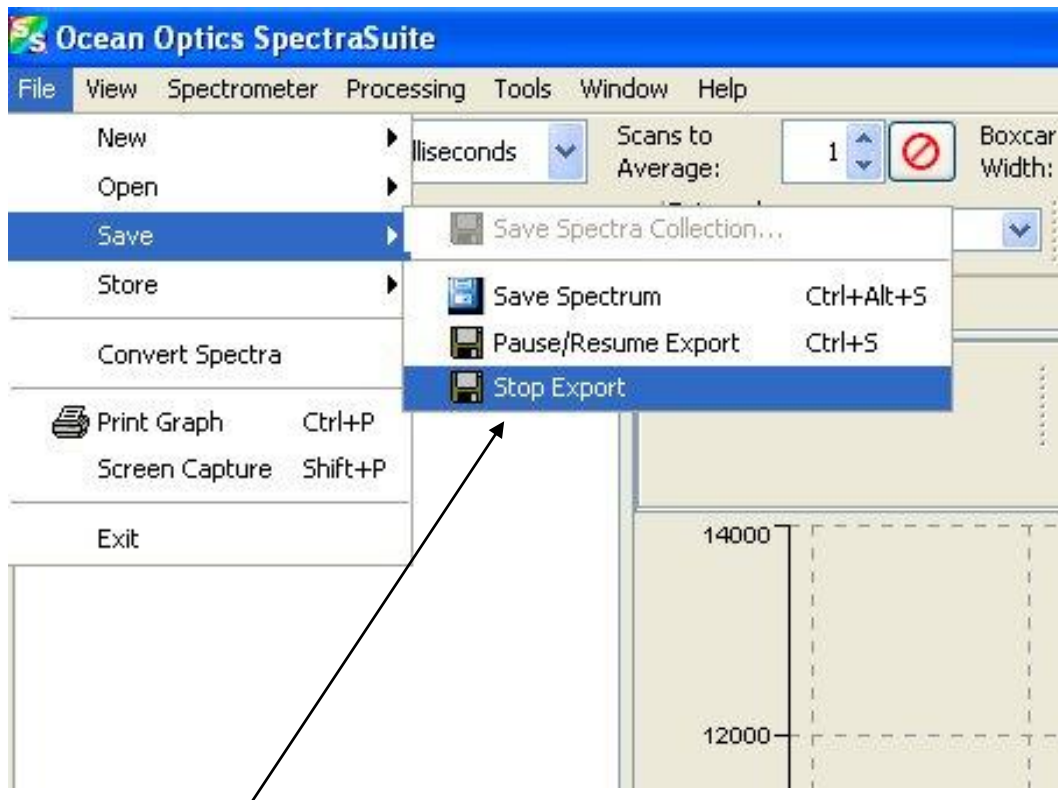
Save Spectrum scans (*.txt) + SJ (video S-VHS → *.FTS)

This menu options displays the Save Spectrum dialog box. Use this box to configure how you want to save your spectra. After you set the options and click .  → **START EXPORT**

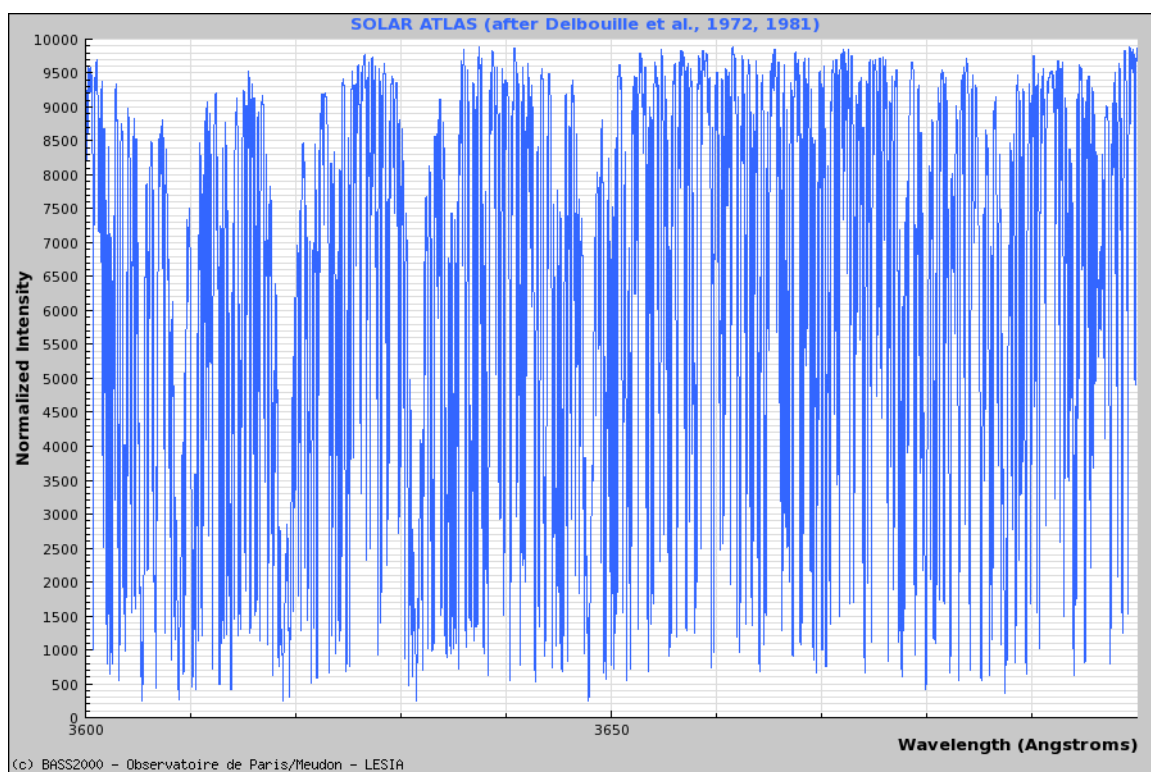




Format *.txt



STOP EXPORT



UV ballmer contunuum 3646 A

P.S> Convert format data *.txt (10001.txt 10001.txt)

Putty → radegast.asu.cas.cz

cd /data/MFS

cd 2012

for i in `ls *.txt`; do cat \$i | sed s/"/"/g> new_txt/\$i; done